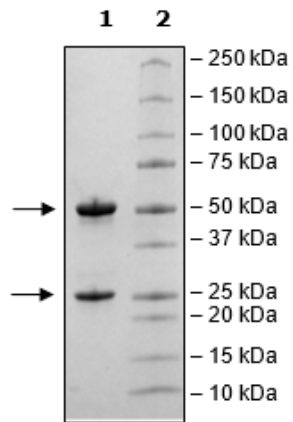


Product Information

Description:	This anti-TL1A T (TNF-like ligand 1A) antibody is a purified, recombinant human monoclonal antibody which recognizes the human TL1A protein. TL1A is also known as vascular endothelial growth inhibitor, VEGI and TNFSF15 (Tumor Necrosis Factor Super Family 15).
Background:	TL1A is involved in immune regulation by binding to two receptors of the TNF (Tumor Necrosis Factor) family present in T and NK cells: DR3 and DcR3. Soluble TL1A induces CD4 ⁺ T cell proliferation and cytokine secretion. TL1A bound to DR3 can switch immune response towards type 1 T-helper cells. Dysregulation can lead to pathologies such as inflammatory bowel disease (IBD) and other auto-immune diseases. TL1A is thus an attractive target for auto-immune disease treatment.
Species:	Human
Isotype:	IgG1
Clonality:	Monoclonal
Concentration:	2.62 mg/ml
Expression System:	HEK293
Purity:	≥90%
Purification:	Protein A affinity chromatography from HEK293 supernatants.
Format:	Aqueous buffer solution.
Formulated In:	8 mM phosphate, pH 7.4, 110 mM NaCl, 2.2 mM KCl, and 20% glycerol
MW:	Heavy Chain: 49 kDa + glycans; Light Chain: 23 kDa
Glycosylation:	This antibody runs at a higher MW by SDS-PAGE due to glycosylation.
Stability:	At least 6 months at -80°C.
Storage:	-80°C
Instructions for Use:	Thaw on ice and gently mix prior to use. DO NOT VORTEX. Perform a quick spin before opening. Aliquot into small volumes and flash freeze for long term storage. Avoid multiple freeze/thaw cycles.
Assay Conditions:	Dose response of Anti-TL1A antibody. TL1A-Responsive Luciferase Reporter Jurkat cells (BPS Bioscience #78811) were plated according to the cell line protocol. A serial dilution of anti-TL1A antibody was prepared and pre-incubated with 1 µg/ml human TL1A for 1 hour. After the 1-hour incubation, the anti-TL1A antibody and TL1A mixture was added to the cells. The plate was incubated at 37°C with 5% CO ₂ for 5 hours before being assayed using the One-Step™ Luciferase Detection Reagent (BPS Bioscience #60690). Data is shown as the percent luminescence of NF-κB luciferase reporter expression, in which the absence of antibody is defined as 100%.
Applications:	Useful for studying the neutralization of TL1A in ELISA and in cellular assays.

Quality Control Data

4-20% SDS-PAGE Coomassie Staining



Anti-TL1A Neutralizing Assay

