



6042 Cornerstone Court West, Suite B
San Diego, CA 92121
Tel: 1.858.202.1401
Fax: 1.858.481.8694
Email: info@bpsbioscience.com

Data Sheet

RBD-c-RAF, GST-tag

Human, Recombinant, N-terminal GST-tag

Catalog #: 100519

Lot #: 200123-1 **Conc.:** 0.97 mg/ml

Formulated in: 40 mM Tris-HCl pH 8.0,
110 mM NaCl, 2.2 mM KCl, 20% glycerol.

Stability: At least 6 months at -70°C . Avoid
freeze/thaw cycles.

References:

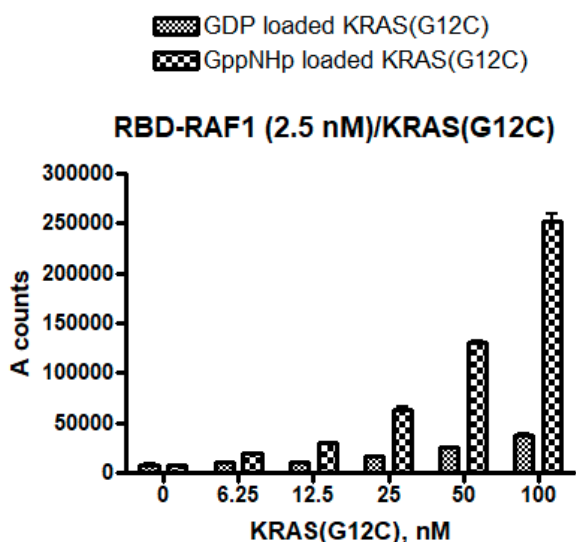
1. Rooij, J., *et al.*, *Oncogene*. 1997;**14**:623-625.
2. Bhaswati, P., *et al.*, *Nature Genetics*. 2007;**39**:1007-1012.

Description: Human Ras Binding Domain (RBD) of Raf-1 Proto-Oncogene, Serine/Threonine Kinase (RAF1) also known as C-Raf and NS5, with N-terminal GST-tag, GenBank Accession No. NM_002880, a.a. 50-140, expressed in an *E. coli* expression system. MW=36 kDa.

Assay Conditions: GppNHp (or GDP) loaded His-tag KRAS(G12C) at various concentrations (BPS Bioscience #100641 and BPS Bioscience #100640) was incubated with 2.5 nM GST-tag RBD-RAF1 for 1 hour at room temperature. KRAS(G12C)/RBD-RAF1 binding was analyzed by AlphaScreening using GSH-Acceptor beads and Nickle Donor beads (PerkinElmer).

Application: Useful for studying RAS/RAF binding study as well as inhibitor screening for RAS/RAF interaction.

Quality Assurance

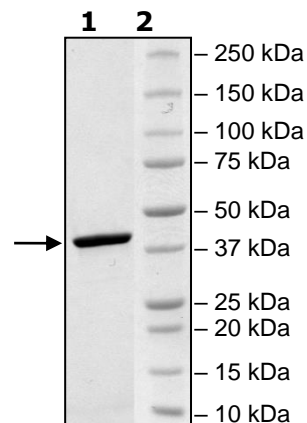


4-20% SDS-PAGE **Coomassie staining**

Lane 1:
2 μg RAF1
Lane 2:
Protein Marker

MW: 36 kDa

Purity: $\geq 90\%$



OUR PRODUCTS ARE FOR RESEARCH USE ONLY. NOT FOR DIAGNOSTIC OR THERAPEUTIC USE.

To place your order, please contact us by Phone **1.858.202.1401**, Fax **1.858.259.5734**

Or you can Email us at: info@bpsbioscience.com

Please visit our website at: www.bpsbioscience.com