

Data Sheet

CD39, His-Tag

Human, Recombinant, C-terminal His-Tag

Catalog #: 71284

Lot #: 180410 **Conc.:** 0.33 mg/ml

Formulated in: 40mM Tris-HCl, pH8, 110mM NaCl, 2.2mM KCl, and 20% glycerol

Stability: At least 6 months at -80°C . Avoid freeze/thaw cycles. Storing diluted enzyme is not recommended, if necessary use carrier protein (BSA 0.1 – 0.5%).

References:

1. Deaglio, S. *et al.*, *Journal of Environmental Medicine*. 2007 Jun **204(6)**: 1257-1265.
2. Borsellino, G. *et al.*, *Blood*. 2007 Aug; **110(4)**:1225-1232.

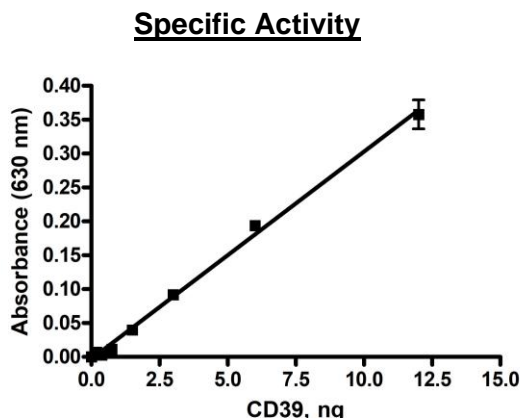
Description: Human CD39, also known as Cluster of Differentiation 39, GenBank Accession number NM_001776, a.a. 38-478 with C-terminal His-tag. MW = 52 kDa, expressed in an HEK293 expression system. This protein runs at a higher MW by SDS-PAGE due to glycosylation.

Specific Activity: ≥ 3000 pmol/min/ μg

Assay Description: Assay was done under kit conditions BPS #79278, measuring Absorbance of colorimetric detection reagent at 630nm. Higher enzyme concentration shows positive correlation with absorbance readouts.

Application: Useful for the study of enzyme kinetics, screening inhibitors, and selectivity profiling.

Quality Assurance



4-20% SDS-PAGE Coomassie staining

Lane 1:

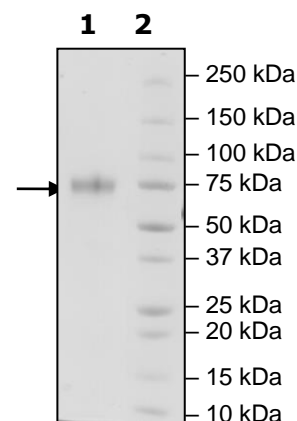
4 μg CD39

Lane 2:

Protein Marker

MW: 52 kDa + glycans

Purity: $\geq 90\%$



OUR PRODUCTS ARE FOR RESEARCH USE ONLY. NOT FOR DIAGNOSTIC OR THERAPEUTIC USE.

To place your order, please contact us by Phone **1.858.202.1401** Fax **1.858.481.8694**

Or you can Email us at: info@bpsbioscience.com

Please visit our website at: www.bpsbioscience.com