

## Data Sheet

### **PD-L1 (CD274), Fc fusion, Biotin-labeled**

Human, Recombinant, Fc fusion protein  
 with C-terminal Avi-tag™

**Catalog #:** 71105

**Lot #:** 170323

**Conc.:** 0.99 mg/ml

**Formulated in:** 8 mM phosphate, pH 7.4,  
 110 mM NaCl, 2.2 mM KCl, and 20%  
 glycerol

**Stability:** At least 6 months at  $-80^{\circ}\text{C}$ . Avoid  
 freeze/thaw cycles. Protein may be diluted  
 to  $\geq 100 \mu\text{g/ml}$  in PBS + glycerol and stored  
 at  $-80^{\circ}\text{C}$ .

**References:**

1. Freeman, G.J., *et al.*, *J Exp Med.* 2000  
 Oct 2;**192(7)**:1027-34.
2. Dong, H., *et al.*, *Nat Med.* 1999  
 Dec;**5(12)**:1365-9.

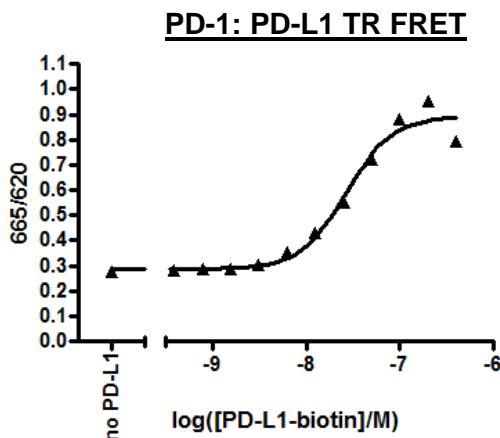
**Description:** Human secreted Programmed  
 Cell Death 1 Ligand 1 (PD-L1)-Fc fusion  
 protein, also known as CD274 and B7  
 homolog 1 (B7-H1), GenBank Accession  
 No. NM\_014143, amino acids 19-239, fused  
 at the C-terminus with the Fc portion of  
 human IgG1, with C-terminal Avi-tag™  
 expressed in a HEK293 cell expression  
 system and enzymatically biotin-labeled  
 using Avi-tag™ technology. MW = 54 kDa.

**Assay Conditions:** PD-1-PD-L1 binding  
 activity, measured using the PD-1:PD-  
 L1[Biotinylated] Inhibitor Screening Assay  
 Kit, BPS Bioscience, Catalog #72003.

**Application:**

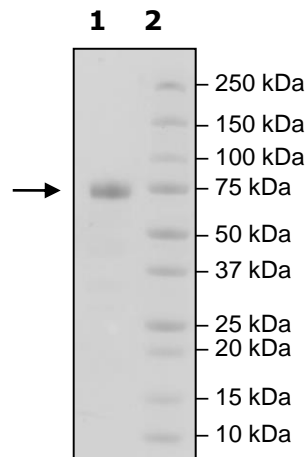
Useful for the study of protein-protein  
 interaction and *in vitro* and *in vivo* protein  
 function.

## **Quality Assurance**



**4-20% SDS-PAGE  
 Coomassie staining**

**Lane 1:**  
 4  $\mu\text{g}$  PD-L1  
**Lane 2:**  
 Protein Marker  
**MW:** 54kDa+glycans  
**Purity:**  $\geq 90\%$



OUR PRODUCTS ARE FOR RESEARCH USE ONLY. NOT FOR DIAGNOSTIC OR THERAPEUTIC USE.

To place your order, please contact us by Phone **1.858.829.3082** Fax **1.858.481.8694**

Or you can Email us at: [info@bpsbioscience.com](mailto:info@bpsbioscience.com)

Please visit our website at: [www.bpsbioscience.com](http://www.bpsbioscience.com)