

Data Sheet

PD-1, FLAG-His-tag, Biotin-labeled

Human, recombinant, C-terminal FLAG-Avi-His-tag

Catalog #: 71325

Lot #: 150903

Conc.: 1.18 mg/ml

Formulated in: 8 mM Phosphate, pH 7.4, 110 mM NaCl, 2.2 mM KCl, and 20% glycerol

Stability: At least 6 months at -80°C . Avoid freeze/thaw cycles. Protein may be diluted to $\geq 100 \mu\text{g/ml}$ in PBS + glycerol and stored at -80°C .

References:

1. Shinohara, T., *et al.*, *Genomics*. 1994 Oct;**23**(3):704-6.
2. James, E.S., *et al.*, *Genes Immun*. 2005 Aug;**6**(5):430-7.

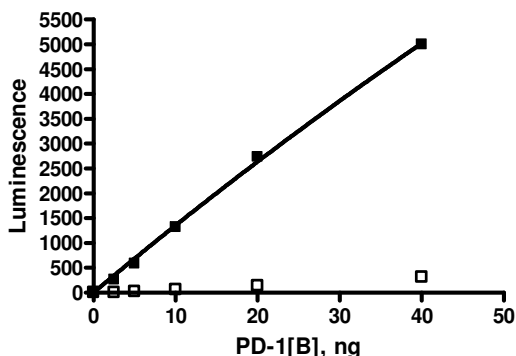
Description: Human secreted programmed cell death 1 (PD-1), also known as PDCD1, SLEB2, CD279 and HPD-L, GenBank Accession No. NM_005018, a.a. 25-167, with C-terminal FLAG-Avi-His-tags, MW=20 kDa, expressed in a HEK293 cell expression system. The protein is enzymatically biotinylated using AviTag™ technology. This protein runs at a higher M.W. by SDS-PAGE due to glycosylation.

Assay Conditions: BPS Cat. 72005 protocol was followed. Briefly, 50 μl of 2 $\mu\text{g/ml}$ PD-L1 was coated onto plates. 20 μl of 0.5 $\mu\text{g/ml}$ PD-1, FLAG-His, Biotin-labeled was allowed to bind at room temp. for 2 hours. Strep-HRP was added and allowed to incubate at room temp for 1 hr, followed by HRP chemiluminescent substrate addition and plate reading.

Application: Useful for studying protein binding and screening small molecular inhibitors.

Quality Assurance

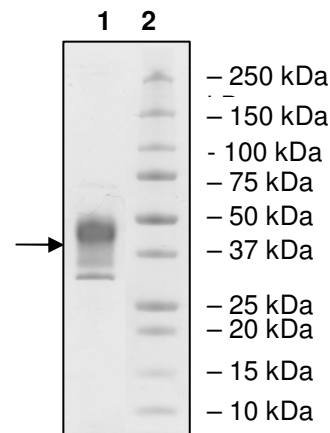
Binding Activity



4-20% SDS-PAGE Coomassie staining

Lane 1:
3 μg PD-1
Lane 2:
Protein Marker

MW: 20.3 kDa + glycans
Purity: $\geq 80\%$



OUR PRODUCTS ARE FOR RESEARCH USE ONLY. NOT FOR DIAGNOSTIC OR THERAPEUTIC USE.

To place your order, please contact us by Phone **1.858.829.3082** Fax **1.858.481.8694**

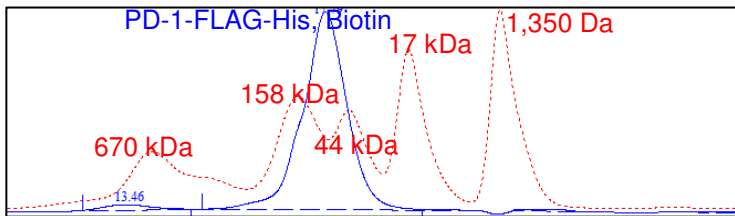
Or you can Email us at: info@bpsbioscience.com

Please visit our website at: www.bpsbioscience.com



6044 Cornerstone Court W, Ste E
San Diego, CA 92121
Tel: 1.858.829.3082
Fax: 1.858.481.8694
Email: info@bpsbioscience.com

Gel Filtration Curve



<5%
Aggregation

OUR PRODUCTS ARE FOR RESEARCH USE ONLY. NOT FOR DIAGNOSTIC OR THERAPEUTIC USE.

To place your order, please contact us by Phone **1.858.829.3082** Fax **1.858.481.8694**
Or you can Email us at: [**info@bpsbioscience.com**](mailto:info@bpsbioscience.com)
Please visit our website at: [**www.bpsbioscience.com**](http://www.bpsbioscience.com)