



11526 Sorrento Valley Rd SteA2  
San Diego Ca 92121  
Tel: 1.858.202.1401  
1.858.829.3082  
Fax: 1.858.259.5734  
Email: [info@bpsbioscience.com](mailto:info@bpsbioscience.com)

## Data Sheet

### PDE1B

Human, recombinant, N-terminal GST tag  
Catalog #: 60011

**Formulated in:** 25 mM Tris-HCl, pH 8.0,  
100 mM NaCl, 0.05% Tween-20, 20% glycerol,  
and 3 mM DTT.

**Stability:** >6 months at -80°C

#### References:

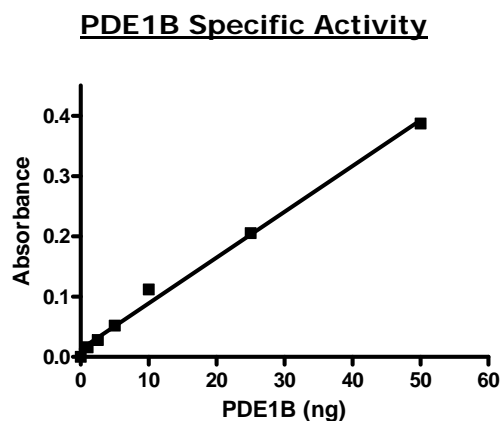
1. Bender A.T. and Beavo J.A. Proc. Natl. Acad. Sci. U.S.A. 103 (2), 460-465 (2006).
2. Bender A.T. et al., Proc. Natl. Acad. Sci. U.S.A. 102 (2), 497-502 (2005).

**Description:** Human PDE1B (GenBank Accession No. NM\_000924), full length with N-terminal GST tag, MW= 87 kDa, expressed in a Baculovirus infected Sf9 cell expression system.

**Specific Activity:** 2922 U/ug. One unit is defined as the amount of enzyme that will convert 1 pmole of 3', 5'-cAMP to 5' AMP per min at 37 °C in a reaction buffer containing 10 mM Tris-HCl, pH 7.4, 10 mM MgCl<sub>2</sub>, 1 mM MnCl<sub>2</sub>, 0.4 mM 3', 5'-cAMP and 0.4 ng/ul PDE1B.

**Application:** Useful for the study of enzyme kinetics, screening inhibitors, and selectivity profiling.

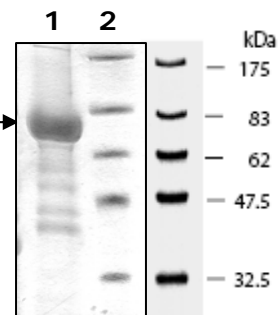
### Quality Assurance



### 10% SDS-PAGE Coomassie staining

**Lane 1:**  
4 µg PDE1B →

**Lane 2:**  
Protein Marker  
BioLabs (#P7708L)



**MW:** 87 kDa.  
**Purity:** >70%

OUR PRODUCTS ARE FOR RESEARCH USE ONLY. NOT FOR DIAGNOSTIC OR THERAPEUTIC USE.

To place your order, please contact us by Phone **1.858.202.1401** or **1.858.829.3082**, Fax **1.858.259.5734**  
Or you can Email us at: [info@bpsbioscience.com](mailto:info@bpsbioscience.com)  
Please visit our website at: [www.bpsbioscience.com](http://www.bpsbioscience.com)