



11526 Sorrento Valley Rd SteA2
San Diego Ca 92121
Tel: 1.858.202.1401
1.858.829.3082
Fax: 1.858.259.5734
Email: info@bpsbioscience.com

Data Sheet

PDE1A

Human, recombinant, N-terminal GST tag
Catalog #: 60010

Formulated in: 25 mM Tris-HCl, pH 8.0,
100 mM NaCl, 0.05% Tween-20, 20% glycerol,
and 3 mM DTT.

Stability: >6 months at -80°C

References:

1. Nagel D.J et al., Circ. Res. 98 (6), 777-784 (2006).
2. Goraya T.A. et al., J. Biol. Chem. 279 (39), 40494-40504 (2004).

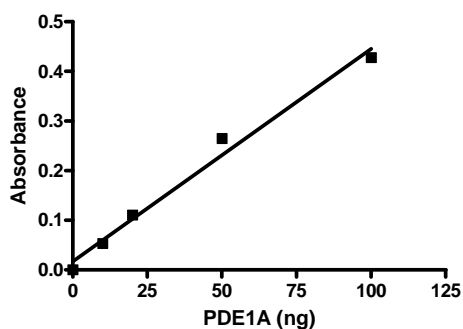
Description: Human PDE1A (GenBank Accession No. NM_005019), full length with N-terminal GST tag, MW= 88.3 kDa, expressed in a Baculovirus infected Sf9 cell expression system.

Specific Activity: 1237 U/μg. One unit is defined as the amount of enzyme that will convert 1 pmole of 3', 5'-cAMP to 5' AMP per min at 37 °C in a reaction buffer containing 10 mM Tris-HCl, pH 7.4, 10 mM MgCl₂, 1 mM MnCl₂, 0.4 mM 3', 5'-cAMP and 1 ng/μl PDE1A.20min.

Application: Useful for the study of enzyme kinetics, screening inhibitors, and selectivity profiling.

Quality Assurance

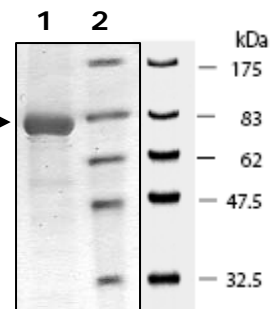
PDE1A Specific Activity



10% SDS-PAGE Coomassie staining

Lane 1:
4 μg PDE1A →

Lane 2:
Protein Marker
BioLabs (#P7708L)



MW: 88 kDa.
Purity: >70%

OUR PRODUCTS ARE FOR RESEARCH USE ONLY. NOT FOR DIAGNOSTIC OR THERAPEUTIC USE.

To place your order, please contact us by Phone **1.858.202.1401** or **1.858.829.3082**, Fax **1.858.259.5734**
Or you can Email us at: info@bpsbioscience.com
Please visit our website at: www.bpsbioscience.com