



11526 Sorrento Valley Rd SteA2  
San Diego Ca 92121  
Tel: 1.858.202.1401  
1.858.829.3082  
Fax: 1.858.259.5734  
Email: [info@bpsbioscience.com](mailto:info@bpsbioscience.com)

## Data Sheet

### AKT1 active

Human, recombinant, N-terminal His tag  
Catalog #: 40003

Formulated in: 25 mM Tris-HCl, pH 8.0,  
100 mM NaCl, 0.05% Tween-20, 50% glycerol,  
and 3 mM DTT.

Stability: >6 months at -80°C

References:

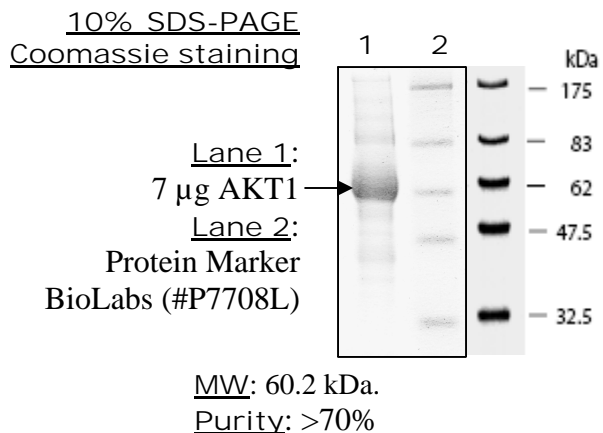
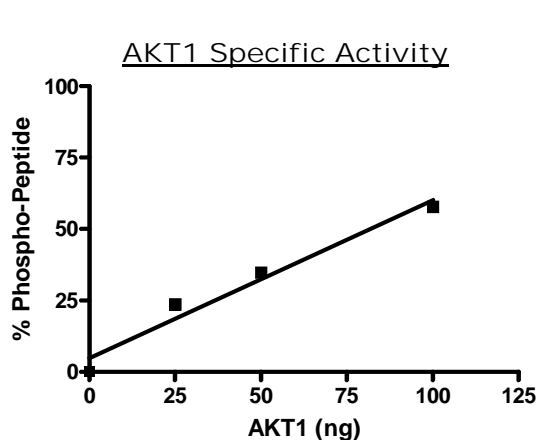
1. Kuijl C, et al., Nature. 2007 Nov 29;450 (7170):725-30.
2. Vogiatzi P and Giordano A. Cancer Biol Ther. 2007 Aug 3;6(10).

Description: Human Akt1 (GenBank Accession No. NM\_001014432), full length (a.a. 1-480) with N-terminal HIS6 tag, MW=60.2 kDa, co-expressed with PDK1 in an baculovirus infected Sf9 cell expression system.

Specific Activity: 12.32 pmol/min/μg enzyme reaction is conducted in a buffer containing 50 mM HEPES (pH7.5), 10 mM MgCl<sub>2</sub>, 1 mM EGTA, 200 μM ATP, 0.01% Brij-35, and 2 μM substrate (SER/THR 6, Invitrogen) at room temperature for 1 hour.

Application: Useful for the study of enzyme kinetics, screening inhibitors, and selectivity profiling.

### Quality Assurance



OUR PRODUCTS ARE FOR RESEARCH USE ONLY. NOT FOR DIAGNOSTIC OR THERAPEUTIC USE.

To place your order, please contact us by Phone **1.858.202.1401** or **1.858.829.3082**, Fax **1.858.259.5734**

Or you can Email us at: [info@bpsbioscience.com](mailto:info@bpsbioscience.com)

Please visit our website at: [www.bpsbioscience.com](http://www.bpsbioscience.com)