



11526 Sorrento Valley Rd SteA2
San Diego Ca 92121
Tel: 1.858.202.1401
1.858.829.3082
Fax: 1.858.259.5734
Email: info@bpsbioscience.com

Data Sheet

PRL3

Human, recombinant, N-terminal HIS tag
Catalog #: 30002

Formulated in: 25 mM Tris-HCl, pH 8.0,
100 mM NaCl, 0.05% Tween-20, 20% glycerol,
and 3 mM DTT.

Stability: >6 months at -80°C

References:

1. Dai N. et al., World J. Gastroenterol. 15 (12), 1499-1505 (2009).
2. Radke I. et al., Br. J. Cancer 95 (3), 347-354 (2006).

Description:

Human PRL 3 (GenBank Accession No. NM_032611), (a-a 2-173) with N-terminal HIS tag, MW = 19.5 kDa, expressed in an E Coli expression system.

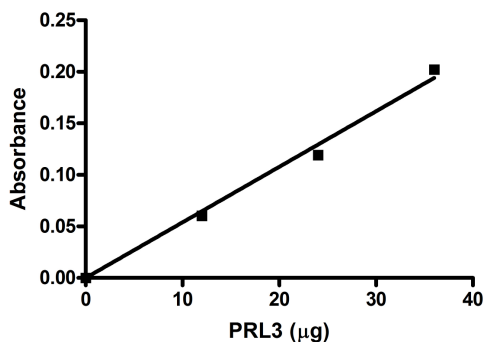
Specific Activity: 0.774 pmol/min/μg,
Assay conditions: enzyme was incubated in 50mM Tris pH7.4, 150mM NaCl 5mM DTT, and 12.5mM PNPP as a substrate for 2h at 37°C. Absorbance was read by Tecan spectrophotometer at 405 nm wavelength.

Application:

Useful for the study of enzyme kinetics, screening inhibitors, and selectivity profiling.

Quality Assurance

PRL3 Specific Activity

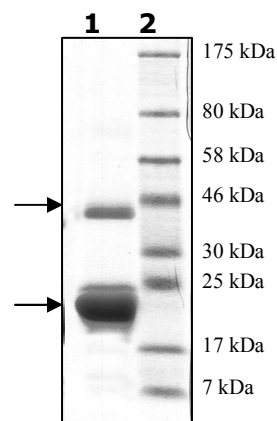


4-20% SDS-PAGE Coomassie staining

Lane 1:
5 μg PRL3
Lane 2:
Protein Marker
BioLabs (#P7708L)

MW: 19.5 kDa

Purity: >90%



OUR PRODUCTS ARE FOR RESEARCH USE ONLY. NOT FOR DIAGNOSTIC OR THERAPEUTIC USE.

To place your order, please contact us by Phone **1.858.202.1401** or **1.858.829.3082**, Fax **1.858.259.5734**

Or you can Email us at: info@bpsbioscience.com

Please visit our website at: www.bpsbioscience.com