



11526 Sorrento Valley Rd SteA2
San Diego Ca 92121
Tel: 1.858.202.1401
1.858.829.3082
Fax: 1.858.259.5734
Email: info@bpsbioscience.com

Data Sheet

PRL2

Human, recombinant, N-terminal HIS tag
Catalog #: 30001

Formulated in: 25 mM Tris-HCl, pH 8.0,
100 mM NaCl, 0.05% Tween-20, 20% glycerol,
and 3 mM DTT.

Stability: >6 months at -80°C

References:

1. Dumauval C.M. et al., J. Histochem. Cytochem. 54 (12), 1401-1412 (2006).
2. Radke I. et al., Br. J. Cancer 95 (3), 347-354 (2006).

Description:

Human PRL 2 (GenBank Accession No. NM_080391), (a-a 2-167) with N-terminal HIS tag, MW = 19.1 kDa, expressed in an E Coli expression system.

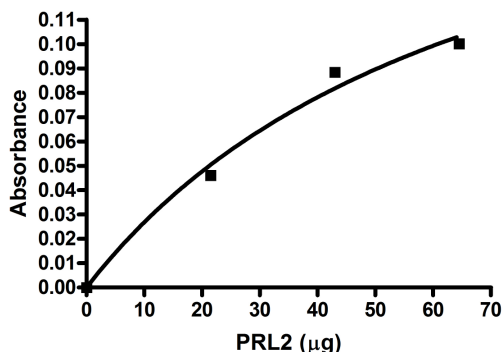
Specific Activity: 0.334 pmol/min/μg,
Assay conditions: enzyme was incubated in 50mM Tris pH7.4, 150mM NaCl 5mM DTT, and 12.5mM PNPP as a substrate for 2h at 37°C. Absorbance was read by Tecan spectrophotometer at 405 nm wavelength.

Application:

Useful for the study of enzyme kinetics, screening inhibitors, and selectivity profiling.

Quality Assurance

PRL2 Specific Activity

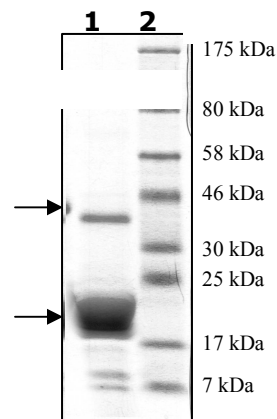


4-20% SDS-PAGE Coomassie staining

Lane 1:
5 μg PRL2
Lane 2:
Protein Marker
BioLabs (#P7708L)

MW: 19.1 kDa

Purity: >90%



OUR PRODUCTS ARE FOR RESEARCH USE ONLY. NOT FOR DIAGNOSTIC OR THERAPEUTIC USE.

To place your order, please contact us by Phone 1.858.202.1401 or 1.858.829.3082, Fax 1.858.259.5734

Or you can Email us at: info@bpsbioscience.com

Please visit our website at: www.bpsbioscience.com