



11526 Sorrento Valley Rd SteA2
San Diego Ca 92121
Tel: 1.858.202.1401
1.858.829.3082
Fax: 1.858.259.5734
Email: info@bpsbioscience.com

Data Sheet

PRL1

Human, recombinant, N-terminal HIS tag
Catalog #: 30000

Formulated in: 25 mM Tris-HCl, pH 8.0,
100 mM NaCl, 0.05% Tween-20, 20% glycerol,
and 3 mM DTT.

Stability: >6 months at -80°C

References:

1. Luo Y. et al., Biochemistry. 2009 Feb 6.
2. Sun J.P. et al., J Biol Chem. 2007 Sep 28;282(39):29043-51.

Description:

Human PRL 1 (GenBank Accession No. BC023975), (a-a 2-173) with N-terminal HIS tag, MW = 19.8 kDa, expressed in an E Coli expression system.

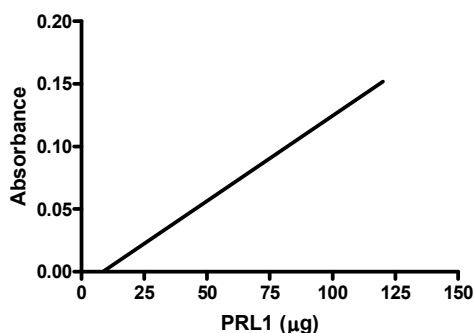
Specific Activity: 0.168 pmol/min/μg,
Assay conditions: enzyme was incubated in 50mM Tris pH7.4, 150mM NaCl 5mM DTT, and 12.5mM PNPP as a substrate for 2h at 37°C. Absorbance was read by Tecan spectrophotometer at 405 nm wavelength.

Application:

Useful for the study of enzyme kinetics, screening inhibitors, and selectivity profiling.

Quality Assurance

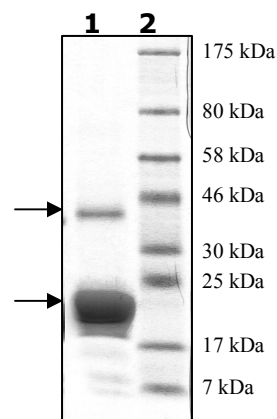
PRL1 Specific Activity



**4-20% SDS-PAGE
Coomassie staining**

Lane 1:
5 μg PRL1
Lane 2:
Protein Marker
BioLabs (#P7708L)

MW: 19.8 kDa
Purity: >90%



OUR PRODUCTS ARE FOR RESEARCH USE ONLY. NOT FOR DIAGNOSTIC OR THERAPEUTIC USE.

To place your order, please contact us by Phone **1.858.202.1401** or **1.858.829.3082**, Fax **1.858.259.5734**

Or you can Email us at: info@bpsbioscience.com
Please visit our website at: www.bpsbioscience.com