

## Product Information

<b>Description:</b>	Anti-Claudin-18 isoform2 (CLDN18.2)-Anti-CD3 IgG format bispecific antibody is a purified recombinant human bispecific antibody with T cell Engager. This bispecific antibody has been tested for specific activity in the functional reporter assay using NFAT-luc reporter Jurkat cell line (BPS Bioscience #60621) in the presence of CLDN18.2-CHO cells (BPS Bioscience #78533-H) that overexpress CLDN18.2.
<b>Concentration:</b>	1.95 mg/ml
<b>Species:</b>	Human
<b>Isotype:</b>	IgG1
<b>Formulated In:</b>	8 mM phosphate, pH 7.4, 110 mM NaCl, 2.2 mM KCl, and 20% glycerol.
<b>Expression System:</b>	Heavy chain (HC) and Light chain (LC) co-expressed in HEK293
<b>Purification:</b>	Protein A affinity
<b>Format:</b>	Aqueous buffer solution
<b>Stability:</b>	At least 12 months at -80°C. Avoid freeze/thaw cycles.
<b>Storage:</b>	-80°C
<b>MW:</b>	Total: 150 kDa (Heavy Chain: 50 kDa; Light Chain: 24 kDa)
<b>Purity:</b>	≥90%
<b>Assay Conditions:</b>	<p><i>Experimental design and assay protocol for measuring anti-CLDN18.2-anti-CD3 functional activity using NFAT-luc reporter Jurkat cell line:</i></p> <p>Jurkat effector cells with endogenous TCR/CD3 and transfected reporter NFAT-luc (BPS Bioscience #60621) are incubated with increasing concentrations of anti-CLDN18.2 x anti-CD3 bispecific antibody in the presence of CLDN18.2-CHO cells (BPS Bioscience #78533-H) or CHO cells (ATCC #CCL61™).</p> <ol style="list-style-type: none"><li>1. Seed CHO and CLDN18.2-CHO cells at 30,000 cells/well and allow a few hours for the cells to attach in a 96-well clear bottom white plate.</li><li>2. Seed Jurkat cells at 30,000 cells/well.</li><li>3. Add the bispecific antibody at a recommended dilution range of 100 fM-100 nM. The bispecific antibody simultaneously binds to TCR/CD3 on the NFAT-luc Jurkat reporter cells and tumor antigen CLDN18.2 on CLDN18.2-CHO cells.</li><li>4. After 16 hours the luciferase activity is measured using ONE-Step™ Luciferase Assay (BPS Bioscience #60690) per recommended protocol. The bispecific antibody interaction stimulates NFAT-luciferase activity.</li></ol>
<b>Applications:</b>	This product is for research use only. It is not suitable for human diagnostic or therapeutic use. The anti-CLDN18.2-anti-CD3 IgG format bispecific antibody can be used for studying CLDN18.2+ cancer cell-mediated T cell activation, using either primary T cells or reporter cell lines such as NFAT-luc-Jurkat cells (BPS Bioscience #60621).

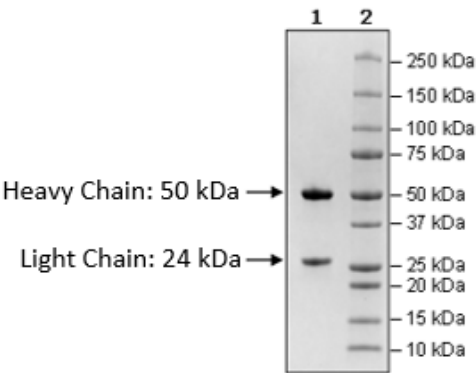
Anti-Claudin-18 Isoform2-Anti-CD3 IgG Bispecific  
Antibody

Catalog: 101541

Lot: 220808

Quality Control Data

4-20% SDS-PAGE Coomassie Staining



Activation of NFAT-Jurkat Reporter cells by Anti-CLDN18.2-Anti-CD3 IgG in the presence of CLDN18.2-CHO cells

