

Data Sheet

Human CD226, Fc fusion

Human, recombinant, Fc fusion protein

Catalog #: 71252

Lot #: 160311-G **Conc.:** 0.92 mg/ml

Formulated in: 8 mM phosphate, pH 7.4,
110 mM NaCl, 2.2 mM KCl, and 20%
glycerol

Stability: At least 6 months at -80°C . Avoid
freeze/thaw cycles. Protein may be diluted to
 $\geq 100 \mu\text{g/ml}$ in PBS + glycerol and stored at -80°C .

References:

1. Bottino, C., *et al.*, *J. Exp. Med.* 2003;
198(4): 557-567.
2. Hafler, J., *et al.*, *Genes Immun.* 2009;
10: 5-10.

Description: Human CD226 antigen also known as DNAX accessory molecule 1 (DNAM-1), GenBank Accession No. NM_006566, a.a. 19-247 fused to Fc region of human IgG1, expressed in a HEK293 cell expression system. MW = 52.8 kDa (monomer). This protein runs at a higher MW by SDS-PAGE due to glycosylation.

Application: Useful for studying protein binding and for screening small molecules and antibodies.

Quality Assurance

4-20% SDS-PAGE Coomassie staining

Lane 1:

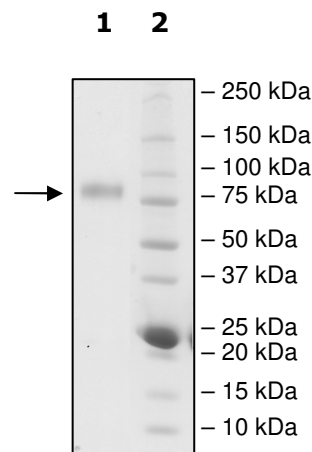
2 μg CD226

Lane 2:

Protein Marker

MW: 52.8 kDa+glycans

Purity: $\geq 90\%$



OUR PRODUCTS ARE FOR RESEARCH USE ONLY. NOT FOR DIAGNOSTIC OR THERAPEUTIC USE.

To place your order, please contact us by Phone **1.858.829.3082** Fax **1.858.481.8694**

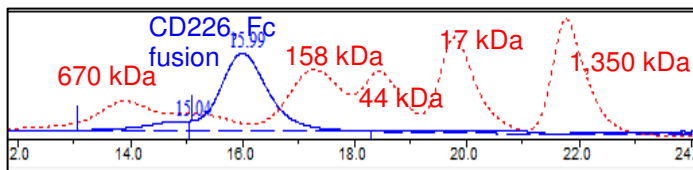
Or you can Email us at: info@bpsbioscience.com

Please visit our website at: www.bpsbioscience.com



6044 Cornerstone Court W, Ste E
San Diego, CA 92121
Tel: 1.858.829.3082
Fax: 1.858.481.8694
Email: info@bpsbioscience.com

Gel Filtration Curve



<10% aggregation

OUR PRODUCTS ARE FOR RESEARCH USE ONLY. NOT FOR DIAGNOSTIC OR THERAPEUTIC USE.

To place your order, please contact us by Phone **1.858.829.3082** Fax **1.858.481.8694**
Or you can Email us at: info@bpsbioscience.com
Please visit our website at: www.bpsbioscience.com