

Data Sheet

CD150, Fc Fusion, Avi-Tag

Human, Recombinant, Fc fusion protein,
C-terminal Avi- tag™

Catalog #: 72304

Lot #: 160419

Conc.: 1.02 mg/ml

Formulated in: 8 mM Phosphate, pH 7.4,
110 mM NaCl, 2.2 mM KCl, and 20%
glycerol.

Stability: At least 6 months at -80°C . Avoid
freeze/thaw cycles. Protein may be diluted to
 $\geq 100 \mu\text{g/ml}$ in PBS + glycerol and stored at
 -80°C .

References:

1. Tatsuo, H. *et al.*, *Journal of Virology*.
2001; **75**: 5842-5850.
2. Sidorenko, S. *et al.*, *Nature Immunology*.
2003; **4**: 19-24.

Description:

Human CD150, Fc fusion protein, also
known as signaling lymphocytic activation
molecule (SLAM) or SLAMF1. GenBank
Accession No. NM_003037, a.a. 21-237
expressed in a HEK293 cell expression
system. This protein is fused at the C-
terminus to the Fc region of human IgG1.
MW = 53 kDa. This protein runs at a higher
MW by SDS-PAGE due to glycosylation.

Application:

Useful for studying protein binding and for
screening small molecules and antibodies.

Quality Assurance

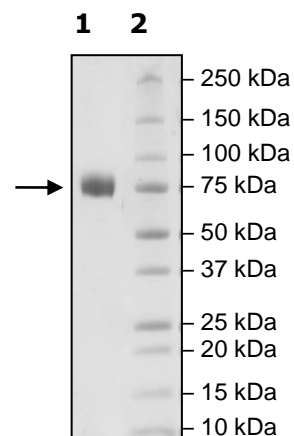
**4-20% SDS-PAGE
Coomassie staining**

Lane 1:
4 μg CD150

Lane 2:
Protein Marker

MW: 53 kDa + glycans

Purity: $\geq 90\%$



OUR PRODUCTS ARE FOR RESEARCH USE ONLY. NOT FOR DIAGNOSTIC OR THERAPEUTIC USE.

To place your order, please contact us by Phone **1.858.829.3082** Fax **1.858.481.8694**

Or you can Email us at: info@bpsbioscience.com

Please visit our website at: www.bpsbioscience.com