

## Data Sheet

### EZH2/SUZ12/RbAP48 Complex

Human, recombinant

**Catalog #:** 51098

Lot#: 120130    Conc.: 0.46 mg/ml

**Formulated in:** : 40 mM Tris-HCl, pH 8.0, 110 mM NaCl, 2.2 mM KCl, 16 mM Glutathione, and 20% glycerol.

**Stability:** >6 months at -80 °C

#### References:

1. Varambally, S. *et al. Science* **322** (5908), 1695-1699 (2008).
2. Rakotobe, D. *et al., Virol. J.* **5**, 32 (2008).

#### Description:

Complex of human EZH2 (GenBank Accession No. NM\_004456) a.a. 2-end with N-terminal His-GST tag, MW= 114 kDa, human SUZ12 (NM\_015355) a.a. 1-end with N-terminal His tag, MW = 87 kDa, and human RbAp48 (NM\_005610) a.a. 2-end with N-terminal His tag, MW = 48 kDa. Co-expressed in baculovirus expression system.

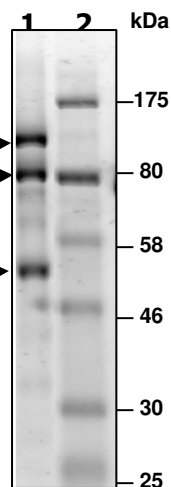
#### Application:

Useful for Western blot analysis and to investigate protein-protein interactions in the EZH2 complex.

## Quality Assurance

### 10% SDS-PAGE Coomassie staining

**Lane 1:** EZH2  
4.6 µg complex  
SUZ12  
**Lane 2:**  
Protein Marker  
BioLabs (#P7708L)  
**Purity:** ≥88%  
RbAp48



OUR PRODUCTS ARE FOR RESEARCH USE ONLY. NOT FOR DIAGNOSTIC OR THERAPEUTIC USE.

To place your order, please contact us by Phone **1.858.829.3082** Fax **1.858.481.8694**  
Or you can Email us at: [info@bpsbioscience.com](mailto:info@bpsbioscience.com)  
Please visit our website at: [www.bpsbioscience.com](http://www.bpsbioscience.com)